

Picturing Sound – An overview of its efficacy

Ceri Williams¹, Eva Petersson² and Tony Brooks²

¹University of Wales, Newport, Wales, UK; ²Aalborg University Esbjerg, Denmark

cerirwilliams@gmail.com, ep@aaue.dk, tonybrooks@aaue.dk

Abstract

This paper presents three case studies selected from a sample of teenage children (n = 11) having severe disabilities. Personalised audiovisual environments are created with a targeted goal to encourage interaction, creativity and artistic expression from the teenagers. The feedback stimulus is directly linked to the child's gesticulations for a sense of associated control to be available for recognition. Non-intrusive sourcing of gesture is through camera data mapped to computer vision algorithms. Intervention strategies from staff and helpers within such user-centred environments are questioned. Results point to the positive benefits for these children such as increased eye-to-hand coordination, concentration duration, and improved communication. These findings corroborate with other research in being indicative of the potentials in utilising such interactive multi-sensory environments in special schools and institutes as a supplemental tool for traditional methods.

Keywords: Interaction, Communication, Empowerment, Therapy, Contingency Awareness

1. Introduction

The use of interactive causal multisensory environments is a promising supplement to promote augmented physical awareness and recovery in (re)habilitation of people with sensory and physical impairments. The term (re)habilitation is used to define those people who are in rehabilitation as well as those who are impaired in a way that has limited their developmental experiences. This study looks at the development and implementation of a Multimedia Multisensory Environment (MME), which is an interactive environment that stimulates multiple senses, principally sight, hearing and touch. The particular MME in the study responds to the movements of a person in the 'activated air' space (Brooks 2004) that the system creates, allowing them to become expressive and artistic communicators through sounds and images and thus able to directly affect their immediate environment. The term Assistive Technology (AT) is used to describe such enabling technology. With this enabling and empowering facility in mind, the school curriculum for many pupils with Severe Learning Difficulties (SLD) and Profound and Multiple Learning Difficulties (PMLD) often focuses on increasing communication skills (including self-expression) and experiential learning due to the complexity of the individuals handicap (e.g. The P-Scales 2005).

2. Background and purpose

It has been stated that Information and Communications Technology (ICT) has the capacity to revolutionise the design, delivery and implementation of user-defined interactive learning experiences to pupils with learning difficulties and especially those with SLD and PMLD (e.g. Lancioni et al. 2001, Standen, Brown and Crombey 2001). Basil (1982), reports that people with SLD and PMLD may have limited opportunities for social communications and therefore can live essentially passive lives. One possible reason is a belief that these people are non-communicators (Ware and Evans 1986). Brinker & Lewis (1982) and Schweigert (1989) indicate that these people are more likely to develop using object interactions. Piaget (1952), states that the general sequence of development in children with and without handicaps is both universal and invariant. With this in mind, the notion must be added that 'contingency awareness' or the acknowledgement of cause and effect is critical in a child's development (e.g. Watson 1966). Whilst Barber (1994) states 'failure on one item does not automatically indicate failure on the next, more complex, stage of development' (1994, p.50) it is not unreasonable to suggest that as well as infants and school-age children, many older people with physical and intellectual difficulties may not have passed through this crucial developmental phase due to this limitation of learning experiences. This minimised social contact due to carer's perceptions that the individual is a non-communicator can be related to the field of developmental cognitive psychology, particularly in educational terms to Vygotsky's 'Zone of Proximal Development (ZPD) (1978). This is defined as 'the distance between the actual developmental level as determined through independent problem solving and the level of potential development as determined through problem solving under adult guidance or in collaboration with more capable peers' (Vygotsky 1978, p.86). If a carer or more capable peer believes the person to be a non-communicator then this opportunity to create a ZPD or to allow a person to enter a

ZPD is missing and therefore crucial learning opportunities can also be missed. The guide, peer, - or as referred to by Wood, Bruner and Ross (1976), the 'scaffolder' - in this particular study is the reactive immersive multisensory environment titled *Picturing Sound*.

There is also significant incidence of depression in people with physical and intellectual difficulties. Esbensen et al (2003) validate an assessment tool (ADAMS) to determine anxiety and depression in people with mental retardation. However, scrutiny of the participant samples revealed 40% had severe or profound mental retardation as well as around 68% had physical and/or sensory impairment. It would appear that the importance of maximising the engagement of these people in personal, meaningful, relevant and pleasurable activities cannot be underestimated if they are to enjoy an equal quality of life in a truly just world (Rawls 1999). Research in the field of viable alternative physio-therapeutic possibilities, for example, Brooks et al. (2002), Reid (2002), Kizony, Katz and Weiss (2004), indicates there may be a subliminal cerebral level available when an experience becomes so enjoyable, that atypical activity occurs, i.e. an activity that the user does not normally engage in. This paper posits that case study 1, described later in section 3, adds some weight to Brooks' (1999) theory of *Aesthetic Resonance* as outlined below.

Prior to Brooks' explorations (1999), Ellis's work with the Soundbeam device (1995, 1997) generated the term 'Aesthetic Resonance' from his work based on his concept of Sound Therapy. Aesthetic Resonance is described by Ellis (1995) as those moments where a child can be seen to be totally engaged by, and enraptured in her or his sound experiences, this through the internal motivation generated by the audio feedback the device produces from the movement and gestures the child makes. Brooks' (2002) definition is different in the respect that Aesthetic Resonance can occur when 'the response to an intent is so immediate and aesthetically pleasing as to make one forget the physical movement (and often effort) involved in the conveying of the intention' (Brooks et al. 2002, p. 205).

The body of research concerning the motivational aspects of the uses of technology with people with physical and intellectual difficulties in education is relatively sparse. However, Bozic and Murdoch's (1997) and Blamires (1999) are two fairly recent volumes that explore the directions and potentials of these new technologies in education. The British government has placed great emphasis on the use of ICT in schools e.g. *Shaping the Future for Special Education* which was published by the Welsh Office (1999), which stated there would 'be more effective and widespread use of Information and Communications Technology to support the education of children with Special Educational Needs (SEN) in both mainstream and special schools' (p.32).

Recent reports by the British Educational Communications & Technology Agency (Becta 2005, 2006a) carry a wealth of statistical data on the current use of ICT in schools. The reports contain a range of information from teacher competence in ICT, quality of use of ICT, pupil access to ICT, teacher use of ICT in planning. It does not however address in great detail the use and deployment of advanced technologies and there is no mention of the term 'assistive technology' (AT) in either report. The 2005 report states that the document by the Office for Standards in Education (Ofsted 2004) argues that in special schools '*...the full potential of ICT to raise pupils' achievements across the curriculum has not been fully realised*' (Ofsted 2004, p.36). It indicates the governments New Opportunities Fund (NOF) initiative provided a sharp rise in teacher competencies in ICT however the 2005 report concluded there are still serious issues in ubiquitous access, reliability of networks, a lack of collaboration in the deployment of ICT, lack of workforce expertise and the need for an overall effective management system. The 2006 document reports acceleration in the development of practice but there remains '*a high variation in the adoption, deployment and use of technology*' (Becta 2006a, p.60). A more recent report from Becta on AT (2006b) highlights the lack of training opportunities in AT for both teacher and learner, and when it is available it is at a basic level. Training therefore remains a key issue- These advanced technologies are in many cases relatively inexpensive to set up and even simple programs used simply have generated phenomenal data as the results section indicates. Training must, it would appear from the literature (Becta 2005, 2006a, 2006b), continue to focus on high levels of teacher attainment in the uses of these technological developments and be shared as widely as possible.

The aim and purpose of this study therefore was to create an interactive MME and evaluate the efficacy of the system from analysis of data gathered from individual users in tandem with interviews with staff. This would propel the development of the system based on observations and interactions of the users and to compare these with the observations and comments of support staff. One particular aim was to see if, in the case of the more severely disabled users, an action could be seen to be intentional rather than random and to see if the 'afferent-efferent' loop closure took place (Brooks et al 2002). Additionally, an aim was to test the

hypothesis of aesthetic resonance proffered by Brooks (2004). As this was a probe study, i.e. the system had not been used before; the outcomes could not be pre-prescribed.

3. Methods

A sample (n=11) of pupils between 11-17 years-of-age that attended a special school for disability were selected by their teacher to take part in the study. Selection was based upon the students potentially gaining a positive experience from the interaction with the MME.

A qualitative method of enquiry was undertaken under a four step strategy of (a) design the case study, (b) conduct the case study (c) analyze the case study evidence, and (d) develop the conclusions, recommendations and implications (Yin 1994, Tellis 1997).

Following an initial meeting with the contact teacher outlining the design and potentials of the system consent letters were sent to parents informing them of the study and offering their child being included. Permit to record videos and to present as research artefacts was also agreed upon by the parents. An outline of the aims of the study was made available for all support teachers and an explanation of the system was given to each pupil. Once all ethical consideration were addressed the sessions were initiated with a teaching assistant in attendance at all sessions to ensure the child's comfort.

Before sessions began one day of videoed observation was undertaken to determine baseline of behaviour. Four sessions took place with each child in the exploratory study. Each session involved a non-intrusive means to empower the child to be in control of manipulating digital audiovisual feedback. A tactile vibrating cushion that responds to sonic input was placed under the child so as to enhance the experience (e.g. Skille 1991). Follow-up post session visits were also included to assess beyond the immediate and short-term effects.

Semi-structured interviews and discussions with teaching staff regarding typical behaviour of each student showed positive response in each case. Typically the staff members were asked to note behaviours by the pupils and contrast them with their behaviours in other class contexts or situations. Staff also offered observations during the sessions and this is discussed in the conclusions section of this article. Three case studies have been chosen as representational of the sample and their diversity of engagement within the MME.

4. System Design

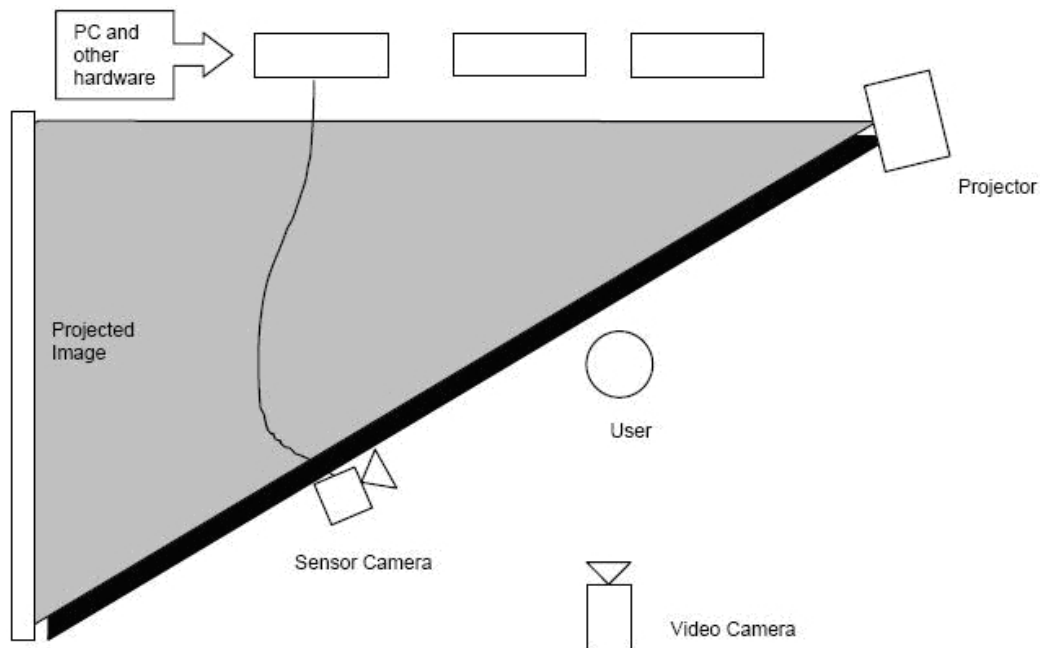


Figure 1 system arrangement

Eyesweb© is the name given to a graphical programming software environment developed at the University of Genoa¹. The software was used in the European IST 5th framework project CAREHERE - with people with Parkinson's disease in Italy (Camurri et al. 2003) and with learning disabled and severe disabled youngsters in Sweden (Brooks and Hasselblad 2004). In both instances the Eyesweb 'bodypaint' algorithms that were developed under CAREHERE in Sweden were used.

The software uses 'blocks' that represent C++ algorithms that can be connected to make a 'patch'. The patch enables a camera to be used as a movement sensor where any movement in the camera's field of view is captured and processed via a computer. The processing is selectable as manipulated visual output relative to user dynamic input, and/or as MIDI (Musical Instrument Digital Interface) signals for manipulating or triggering of sonic feedback via a sound module/synthesizer. The resulting processed feedback is viewed on a large screen or heard via a sound system.

5. Method of analysis

The method of video analysis was qualitative, based in part on *Layered Video Analysis* (Ellis 1996) and the body of work that has evolved into what has been termed *Recursive Reflection* (Brooks and Petersson 2005). Layered Video Analysis (Ellis 1995) involves dissecting the video recording from the sessions into various activity components e.g. physical movement, aural or facial responses, responses to timbral qualities; and layering these into sequential accounts of particular activities thus building a record of progression in identified modes. Recursive Reflection (Brooks and Petersson 2005) involves analysis of the video but in a broader, collaborative holistic way as sessions are first viewed by the researchers and subsequently where appropriate by parents, carers, support staff, i.e. the views of those closest to the participant are thus included in the post-session video analysis/interpretations. In a similar manner to layered analysis a focused progression is addressed however Recursive Reflection differs mostly due to the maintaining of the original video recordings so that the original session data can be returned to for later reflection following advances in learning. This approach centres upon a participatory action research paradigm that is synthesized by a hermeneutic interpretation (Brooks 2006).

Collected field data included: video footage of pupils (in the Picturing Sound environment and in the normal classroom environment); the interviews and discussions with staff (immediately following the sessions and upon subsequent visits); staff notes and author's field notes from the sessions.

Case study 1

Case study one was a female 13 years-of-age with verbal competence. She had general learning difficulties and her right arm had become lame and unused ever since an operation to remedy incidences of epilepsy had gone wrong. The arm now hung by her side unused. The first session lasted around 15 minutes in which a swirling metallic synthesizer sound was selected along with a preset drum beat as the audio feedback. In her 1st session, she began 'painting' using her 'unused' right arm almost immediately the Eyesweb© processed image was switched on for a period of 5 minutes; calling to her friend to look at the images she created. A senior member of staff commented about her surprising use of her dysfunctional arm with the system. Van Raalte (1998) reports similar findings in his work with a person who uses their partially paralysed arm within his Bodysynth© system. In the brief interview following the session the pupil expressed enjoyment of the activity i.e. by talking with her friend animatedly.

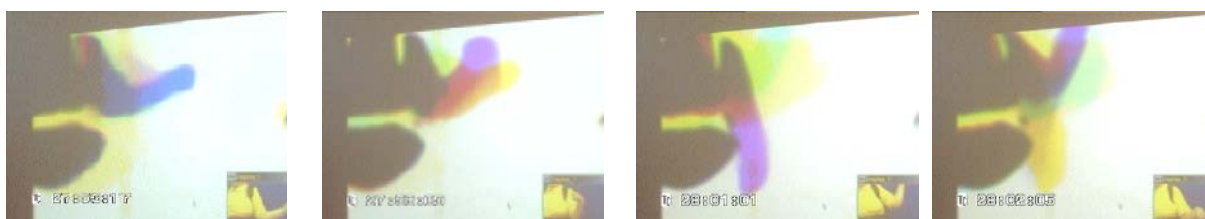


Figure 2 Case study 1 images 1-4 viewing left to right

In Figure 1 the inset image (lower right corner) shows the source image whilst the large image shows the processed Eyesweb algorithm of the source; the image sequence is numbered left to right (1-4). The blue area in image 1 indicates the initial area occupied by the child's arm; image 2 shows that her arm has moved up into the purple area whilst the yellow area indicates the previously occupied space. Image 3 shows her arm

¹ <http://www.infomus.dist.unige.it>

pointing down (purple area) and image 4 her arm pointing up (purple area) whilst the 'ghosted' yellow area shows the previously occupied space. Note her arm position in the inset window in image 3 corresponds to the processed image in image 4. This inherent latency is typical in such image processing.

In the pupil's subsequent session of around 20 minutes, the camera was positioned to optimize the capturing of data from the 'x' axis, i.e. the left/right movement of her arm to maximise the audio and image feedback.

This time the sound was a swooping clear synthesizer timbre. When asked to try to move her disabled arm, she replied 'that's my bad arm', but within a minute she was using it to paint again for several minutes, seeming to forget it was her bad arm. She also made tiny movements with the fingers of her good arm, and from the video data, she appears to be visually immersed in the environment as her eye gaze was firmly directed at the screen. Again in the interview following the session the user enthused about her experience stating that 'it was good that was!'

Case Study 2



Figure 3 Case study 2 on floor mat with inverted image on screen – helper (left) author (right)

Case study two was a 15 years-of-age male without verbal competence. He had acquired severe physical and intellectual difficulties as a result of an automobile accident when he was 8 years-of-age. His first session indicated that camera positioning was critical in capturing the maximum expressive gesture possible. The system set-up was as above but his physical disabilities meant he could only see his image with great effort due to his head position when in his wheelchair as the projected image was too low. In spite of these hindrances the video analysis revealed the user made significant efforts to see his unprocessed image and vocalised his utterances frequently. The teaching assistant (TA) also noted he had smiled on seeing his initial image, as the video revealed on reflection. This vocalising increased when the Eyesweb© processed image was switched on a few minutes later and his attempts to view himself increased from around 1 second when his unprocessed image could be seen to 3 or 4 seconds with the processed image. The teaching assistant advised that the user vocalised when he was happy which is corroborated in Brooks' case study of Martin (2002) where a severely handicapped boy vocalized freely when controlling a 3D virtual spaceship by moving his head. In session 2 the teenager was placed on the floor with the screen image inverted so he could see himself as if he were upright. Again the camera was positioned to capture the maximum amount of movement of his limbs. A calm soothing sound was chosen and again he made repeated vocal responses, uttering an 'aaaaah' sound. He initially focussed his gaze on the camera recording the scene but video analysis indicated a shift toward the screen image over the course of the session. In his 3rd session and based on his vocal responses in his first session, the addition of a lapel microphone processed through an effect unit² to produce a pronounced echo provided him with an additional expressive channel. His vocalisations being echoed back to him, on recognising this, his sound-making appeared to increase.

² Korg Kaoss pad: www.korg.com/gear/info.asp?A_PROD_NO=KP2

Figure 3 shows case Study 2 in his final session. The scene shows his image inverted so he can see his image the right way up. This was the session where the TA said she had never heard him be so vocal and the picture captures him ‘shouting’. This final session began with him smiling when placed in the space and blinking his eyes to communicate an affirmative response when author 1 questioned him if it was nice? Again the microphone was used repeatedly as he vocalized his ‘aaaaah’ sound, in varying volumes and pitch. When asked whether he wanted his image on the screen as previously he again communicated affirmatively through his eyes blinking. Toward the end of the session an unfortunate but significant incident occurred, and was reported by the TA in attendance as a seizure that occurred as a result of his enjoyment and over-excitement of what was experienced. Following the post-session interview the staff member remarked that the boy had seen author 1 early in the day and as a result, with memories of his previous three sessions, had been in a state of excited anticipation all day up to the session start. Following the seizure (which lasted less than a minute), the sound source was changed to a very relaxing, calm timbre and the TA reattached the microphone. After a few minutes, he began again responding vocally. It must be noted that the TA clarified the situation for those present and the incident did not seem to affect the outcome of the session in a negative way. In the follow up interview the TA stated she had never heard him be so vocal as in this final session.

It must be noted that observations from the early sessions indicated a traditional microphone on a stand was considered far too intrusive and cumbersome, the feet and arms of the stand cluttering the area and also showing up on the processed Eyesweb© image generated by the user.

Case Study 3.

Case study 3 was a 15 years-of-age, non-verbal, non-ambulant female with cerebral palsy. In her 1st session of 15 minutes, there was far too much interference from staff members for a true analysis of her responses to the environment – for example continuously they kept calling out for her to initiate vocalising and movement. In the second session however, the environment was far quieter. The user was highly stimulated by the sounds her movements made when she was activating the sensor sound module³. The sensor area was placed within reach of her right arm (Figure 5, image 1). The tone produced a swooping harsh sound she clearly found amusing as she laughed and smiled. Observations indicated that she had a clear understanding that her movements were generating or affecting the sounds she heard.



Figure 4 Case study 3 images 1-4 viewing left to right

The first image in figure 5 shows the location of the sensor sound module with the girl looking down at it after a short period of exploration in which the sounds respond to her movement. The second image shows her reaction beginning when she causes the device to make a radical change in sound. Image 3 shows her laughing even more in response to the sonic feedback and image 4 shows her looking back down at the device after a lull in the sonic feedback.

The girl’s eye movements indicated an apparent lack of interest in the visual feedback of the space but the video of her interaction with the sensor indicate profound levels of aesthetic resonance with the audio sounds her movements generated. This state can be likened to (a) the psychological state of *flow* (Czikszentmihalyi, 1990) that is achieved when there is a perfect match between the demands of an activity and the ability of the participant where total immersion occurs, and/or (b) as an Autotelic i.e. intrinsically rewarding – experience (e.g. Steels 2004).

The 3rd session had both MIDI sounds generated from the Eyesweb patch and the sensing device (see footnote); again there was very little interest in the visual aspect however the first author posits that a much larger screen may have yielded different results. The 4th session generated similar positive interactions, however technical and logistical problems interrupted this session, and the instances of engagement in the space were somewhat brief. At the end of each session the user signed ‘yes’ when asked if she had enjoyed the experience whilst smiling and motioning her body to suggest a positive communication.

³ Alesis Airsynth™ - <http://www.alesis.com/news/press/airsynth.html>

6. Results summary

The results indicated significant differences in attention span or engagement in the environment with each child compared with attention in other activities or typical classroom situations as the case studies and results illustrate. This manifested itself according to the different sensory or physical impairments of each child. The exploratory study yielded indications at the potential of MME in special schools education curriculum. Despite the limited number of sessions and related interviews findings indicates at the potentials of bringing such systems into the mainstream curriculum for special schools.

7. Conclusions

The aims of this study were to evaluate the effect of a MME on different pupils with learning difficulties. Also to observe any phenomena that could constitute aesthetic resonance and to explore whether instances of the closure of the 'afferent-efferent' loop took place.

As with any prototype system there were teething problems, wires trailing, difficulties with projection, external noises and interventions and technical failures. All of these however contribute to the development and refinement of the system specifications and analysis methodologies, and therefore expanding and refining the research procedure.

The findings corroborate with those reported in Ellis (1995), where he reports pupils make clear gestures and indicate through smiles and laughs they are aware it is them who are creating and affecting the sounds they hear. Also Brooks (2004) indicates the potential for possible self-training programmes in physical rehabilitation. Case study 1 adds some strength to this theory. The work this paper outlines and references points to the need for continued research into how this technology can be further adapted and personalized to enable and empower those with disabilities to increasingly access the world around them in ways never before achievable. The potential for these new subliminal therapies (Brooks, 2003), both in the physical sense, as in case study 1, and the intellectual developmental sense, as in case studies 2 and 4, is a vein of research rich in possibilities.

The question that remains is can these user-definable systems enable and empower the most severely disabled pupils to eventually become better communicators and less dependent on others, or rather, independent? The authors suggest that in view of the results gathered here, further research and development of these types of system can help to make this a reality. Unlimited access to these technologies for as many people as possible must remain a priority. As indicated, the importance of high levels of teacher competence to utilize these advances is critical if the empowerment and enablement they bring is to enter the mainstream curriculum. Continuing Professional Development (CPD) in deploying these technologies must remain at the heart of the governments training strategies for greater accessibility to the curriculum for those with least access to it.

Implications in education of such non-formal learning potentials (e.g. Petersson 2006) for such people with different abilities must be accounted for over the current traditional methods. On reflection available tools could in future be adapted to supplement the method used of the reported study so as to satisfy the 'hard science' sector e.g. The Geneva Appraisal Questionnaire (GAQ⁴) and Geneva Emotion Analyst tool⁵, both which are based on Scherer's Component Process Model of Emotion (Scherer 1993); also the Code for the Classification of Emotion Antecedent Situations and Responses tool⁶ may be adapted. Inter-coder annotation is planned for the future work utilising the Anvil software tool⁷ so that a clear indication of progression between and over a series of sessions is monitored. The use of such tools is speculated to enable us to approach the determining of patterns in human responses to the multimedia stimuli from a physical and psychological perspective.

The explorative study suggests that the design of this kind of system, to supplement in special education, must be able to adapt to each individual user in addressing their abilities and preferences. A selection of devices was used in the study so as to optimise the experience for the user and to maximise the potential input data relative to the abilities of the individual. A variety of multimedia content was used and findings

⁴ GAQ English version: http://www.unige.ch/fapse/emotion/resmaterial/GAQ_English.pdf

⁵ <http://www.unige.ch/fapse/emotion/demo/TestAnalyst/GERG/apache/htdocs/index.php>

⁶ <http://www.unige.ch/fapse/emotion/resmaterial/CodeAppB.pdf>

⁷ <http://www.dfki.de/~kipp/anvil/>

indicated that self-modulating sounds and images can confuse as a direct association is needed to motivate proprioceptive training and to support closure of the afferent-efferent neural loop (i.e. cause & effect via the Stimulus – Response chain – see Scherer). The emotion and communication theories of the Geneva Emotion research Group⁸ are inspiring for the future development of the system in respect of the human response to the feedback content.

The next step is to achieve funding to undertake a longer-term investigation as a secondary exploratory study in designated surrounds that optimise the potentials for the children so as to achieve data that is not corrupted by the interference of well-meaning staff members who are unfamiliar with research methodologies. The paradigm of the research is further being developed with the goal of more clearly defining the methodological and theoretical framework for the future iterations of the work.

References

Barber, M. (1994) *Contingency awareness: putting research into the classroom*. In Coupe O' Kane, J. and Smith, B. (Eds) *Taking control: enabling people with learning difficulties*, David Fulton Publishers, London, pp. 49-59

Basil, C. (1992) *Social interaction and learned Helplessness in Severely Disabled Children*. *Augmentative and Alternative Communication*, 8(3), 188-199.

Becta (2005) *The Becta Review 2005; Evidence on the progress of ICT in education*. DfES.
http://www.becta.org.uk/page_documents/research/becta_review_feb05.pdf Accessed March 2, 2005

Becta (2006a) *The Becta Review- Evidence on the progress of ICT in education*. Accessed June 9, 2006
http://becta.org.uk/corporate/publications/documents/The_Becta_Review_2006.pdf

Becta (2006b) *Becta's View- Assistive Technology*. Accessed June 9, 2006
<http://becta.org.uk/corporate/publications/documents/BV%20assistive%20technology.pdf>

Blamires, M. (1999) *Enabling Technology*. Paul Chapman, London

Bozic, N. and Murdoch H. (eds.) (1996) *Learning through interaction: technology and pupils with multiple disabilities*. David Fulton, London

Brinker, R. and Lewis, M. (1982) *Making the world work with microcomputers: a learning prosthesis for handicapped infants*. *Exceptional Children* 49 (2), 163-170

Brooks, A.L. (1999) *Virtual Interactive Space*, Proceedings of the World Congress of Physical Therapy, Yokohama, Japan, May 23-28, 1999, pp. 66

Brooks, A.L., Hasselblad, S., Camurri, A., and Canagarajah, N. (2002) *Interaction with shapes and sounds as a therapy for special needs and rehabilitation*. In: P. Sharkey, C. Sik Lanyi and P. Standen (eds.), 4th Int. Conf. on Disability, Virtual Reality, and Associated Technologies 18-20 September 2002, Veszprém, Hungary, Reading: University of Reading Press, pp. 205-212

Brooks, A.L. (2004) *Enhanced Gesture Capture in Virtual Interactive Space*, Proceedings of Computers in Art, Design and Education, Copenhagen, June 29-July 1, 2004, <http://asp.cbs.dk/cade2004/proceedings.htm> Accessed November 11, 2004

Brooks, A.L. (2005) *Enhanced gesture capture in virtual interactive space (VIS)*. *Digital Creativity*, 16(1) 43-53

Brooks, A.L. and Petersson, E. (2005) *Recursive reflection and learning in raw data video analysis of interactive 'play' environments for special needs health care*. In: Proceedings of Healthcom2005, 7th International Workshop on Enterprise Networking and Computing in Healthcare Industry, Busan, Korea, June 23-25, 2005, NJ: IEEE Press, pp. 83-87

Ellis, P. (1995) *Incidental Music: a case study in the development of sound therapy*. *British Journal of Music Education* 12 (1), 59-70

⁸ http://www.unige.ch/fapse/emotion/publications/geneva_studies.html

- Ellis, P. (1996) *Layered analysis: a video-based qualitative research tool to support the development of a new approach for children with special need*, In the Bulletin for the Council For Research in Music Education, University of Illinois at Urbana-Champaign, USA, pp. 65-74
- Ellis, P. (1997) *The music of sound: a new approach for children with severe and profound and multiple learning difficulties*. British Journal of Music Education 14 (2), 173-186
- Esbensen, A.J., Rojahn, J., Aman, M.G. and Ruedrich, S. (2003) *The reliability and validity of an assessment instrument for anxiety, depression and mood among individuals with mental retardation*. Journal of Autism and Developmental Disorders 33, pp. 617-629
- Kipp, M. (2004) "Gesture Generation by Imitation – From Human Behavior to Computer Character Animation", Boca Raton, Florida: Dissertation
- Kizony, R., Katz, N. and Weiss, P.L. (2004) *Virtual reality based intervention in rehabilitation: relationship between motor and cognitive abilities and performance within virtual environments for patients with stroke*. In: P. Sharkey, R. McCrindle, and D. Brown, (eds.) 5th Int. Conf. on Disability, Virtual Reality, and Associated Technologies 20-22 September 2004 Oxford University, England. Reading: University of Reading Press, pp. 19-26
- Lancioni, G.E., O'Reilly, M.F., Oliva, D. and Coppa, M.M. (2001) *A microswitch for vocalization responses to foster environmental control in children with multiple disabilities*. Journal of Intellectual Disability Research 45(3), 271-275
- Ofsted (2004) *ICT in schools 2004: the impact of governments initiatives five years on, HMI 2050*, Ofsted, London
- Petersson, E (2006) *Non-formal learning through ludic engagement within Interactive environments*. PhD thesis. Lunds University, Malmö Studies Educational Science, Sweden
- P-Scales (2005) QCA. <http://www.qca.org.uk/8798.html>, Accessed May 23, 2005
- Piaget, J. (1952) *The origins of intelligence in childhood*. International Universities Press, New York
- Rawls, J. (1999) *A theory of justice*. Rev. Ed. Oxford University Press, Oxford
- Reid, D.T. (2002) *The benefits of a virtual play rehabilitation environment for children with cerebral palsy on perceptions of self-efficacy. A pilot study*. Paediatric Rehabilitation 5 (3), 141-148
- Scherer, K.R. (1993) *Studying the emotion-antecedent appraisal process: An expert system approach*. Cognition and Emotion, 7, pp. 325-355
- Schweigert, P. (1989) *Use of microswitch technology to facilitate social contingency awareness as a basis for early communication skills*. Augmentative and Alternative Communication 5 (3), 192-197
- Standen, P.J., Brown, D.J. and Cromby, J.J. (2001) *The effective use of virtual environments in the education and rehabilitation of students with intellectual disabilities*, British Journal of Educational Technology, 32 (3), 289-299
- Steels, L. (2004) *The autotelic principle*. Available at www.csl.sony.fr/downloads/papers/2004/steels-04b.pdf accessed September 2006
- Tellis, W. (1997) *Application of a case study methodology*. The Qualitative Report [On-line serial], 3(3). Available at <http://www.nova.edu/ssss/QR/QR3-3/tellis2.html> accessed September 2006
- van Raalte, C. (1998) *Old dog, new tricks biofeedback as assistive technology*. In: Proceedings of Center on Disabilities, Technology and Persons with Disabilities Conference <http://www.csun.edu/cod/conf/1998/proceedings/csun98.htm>
- Vygotsky, L. (1978) *Mind in society: the development of higher psychological processes*. Cambridge, MA, Harvard University Press
- Ware, J. and Evans, P. (1986) *Interactions between profoundly handicapped pupils and staff in a special care class*. In Berg, J.M. & de Jong, J. (eds.) Science and Service in Mental Retardation. London, Methuen

Watson, J. S. (1966) *The development and generalization of 'contingency awareness' in early infancy: Some hypotheses*. Merrill-Palmer Quarterly, 12, 73-94

Welsh Office (1999) *Shaping the Future for Special Education - An Action Programme for Wales*. Welsh Office, Cardiff

Wood, D., Bruner, J.S. and Ross, G. (1976) *The role of tutoring in problem solving*. Journal of Child Psychology and Child Psychiatry, 17, 89-100

Yin, R. (1994) *Case study research: Design and methods* (2nd ed.). Thousand Oaks, CA: Sage Publishing

Ceri Williams is a freelance musician and teacher. Aside from extensive performing and recording, he also runs a thriving jazz workshop for the local jazz society. He has taught in special and mainstream schools for the past nine years. Through his exploratory work with the Eyesweb© software and the Picturing Sound environment for his MA his work now focuses on developing and refining the system.

Dr. Eva Petersson is an Assistant Professor at Esbjerg Institute of Technology, Aalborg University in Denmark. Her theories of non-formal learning and play related toy research are the basis for her PhD which was achieved under Lund University, Sweden. Her international research is centred upon development and use of toys and interactive environments applied in play, learning and rehabilitation contexts. Her work includes methodological approaches that consider idiosyncratic appropriation, participatory involvement and action driven situated use.

Tony Brooks is Associate Professor at Esbjerg Institute of Technology, Aalborg University in Denmark and CEO of his own company which he founded and named after his concept SoundScapes. In 2006 he achieved his PhD under the Art, Media, Design and Culture department, the University of Sunderland, England. He has received prestigious national and international awards for his SoundScapes body of research which has also been subject of research funding in excess of 3M Euros. He is founder of the ArtAbilitation conference.